

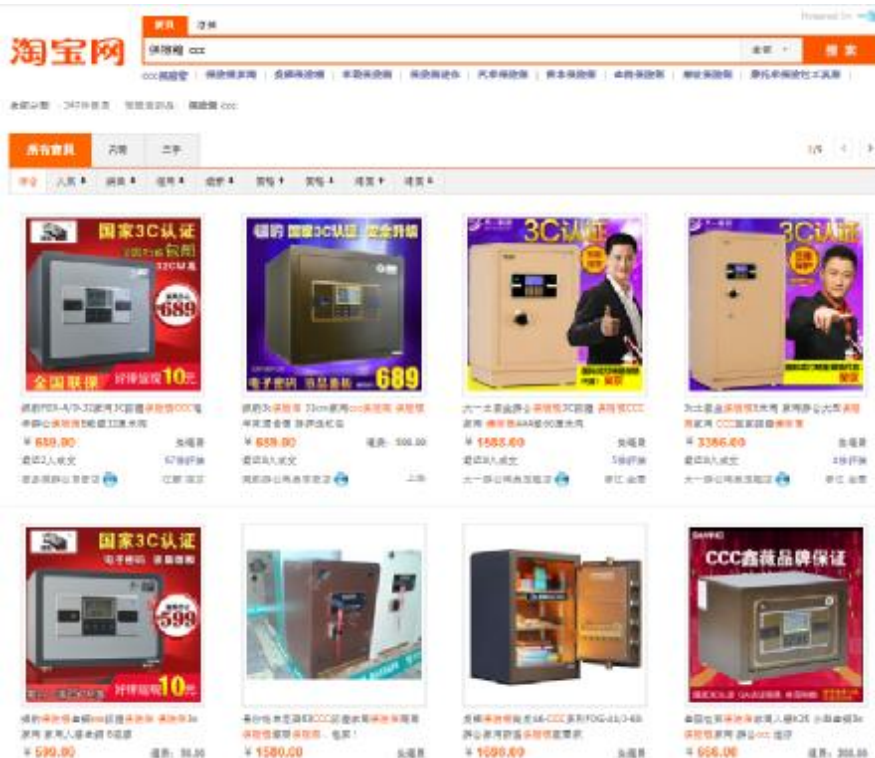


# **CCC (Elite HD) Safe Product Launch Presentation (For Customer)**



- 
- 1. Background**
  - 2. Product Introduction**
  - 3. Features**
  - 4. Specifications**
  - 5. Packaging & User Manuals**
  - 6. Marketing Materials**
  - 7. Ordering Information**
-

# Background



§ CCC (China Compulsory Certification) is a certification for different types of product selling in China market, which guide the product safety and specification.

§ For Safe products, it is focused on the security, in both the safe box and the lock.

§ To develop the Yale Safe business in China, a new CCC Safe is developed with meeting the CCC spec e.g. extra door/wall thickness, certified cylinder, etc.

§ Even though CCC is not needed for markets outside China, the extra strong safe with luxury interior makes it a good product line up for the Yale Safe family.

§ Since the panel design is the same as the Elite Safe, for markets outside China, the model name is called Elite Heavy Duty Safe. And it is now open for order.

# Product Introduction





# Features



- § Unique Yale design panel with dial button array
  - § First of its kind in current Yale Safes
  - § Seamless “one-piece” design of panel for modern look and feel.



- § Digital passcode plus high security mechanical key to unlock the safe
- § Emergency key available in case passcode forgotten
  - § Each safe unit comes with 2 pcs mechanical keys and 2 pcs emergency keys



# Features



- § 5 x 25mm solid steel bolts
- § Extra strong 10mm door / 6mm wall
- § Laser cut door to minimize the gap against prying
- § Reinforced door hinge
- § Certified by CCC security tests include:
  - § Anti-Drilling, Prying, Hammering, Sawing, Cutting, etc.
  - § Both mechanical and electronic locks are tested and certified for the security and reliability.



# Features



- § Full interior coverage of high quality PU carpet
  - § Protect valuables from scratches
  - § Premium and aesthetic
- § 2 x Adjustable racks (also covered by PU carpet)
- § 12 x key hangers
- § 2 x passport / card slots



# Features



- § Portable LED lighting device
  - § With magnet which can be relocated to any where on the safe box according to the users' needs.
  - § With IR sensor which will automatically light up when the door is opened.





# Features

---

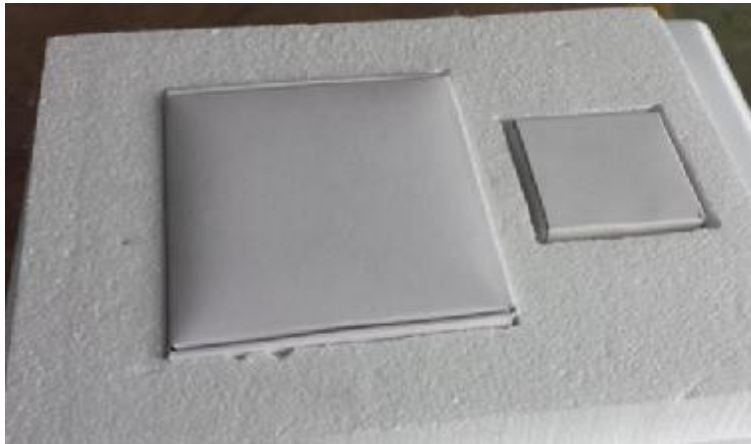


- § 2 x fixing holes at the back for installing the anchoring bolts.
- § 2 x steel anchoring bolts included for installation





# Features



- § Well packaged box for holding the accessories
- § Including the LED lighting device
- § And Mechanical Key, Emergency Key, Batteries for the Safe and batteries for the LED device, steel anchoring bolts.





# Features

---

## Safe Structure and Locking Mechanism

- § China CCC certified mechanical key and cylinder
- § 10mm steel door; 6mm steel wall
- § 5 x 25mm steel bolts (3 at side, 1 at top and 1 at bottom)
- § Laser cut door
- § Reinforced hinge
- § Full interior PU coverage
- § Portable LED lighting device with automatic sensor
- § Pre-drilled holes for anchoring
- § 2 x steel anchoring bolts provided for installation



# Features

---

## Electronic Panel Features

- § 3-6 digits combination LED display
  - § Automatic lock down for 3 minutes on three consecutive incorrect entries and buzzer alarm for 1 minute
  - § Easy operation for new code setting: Enter passcode and press “Key” to set a new code and lock the safe at the same time
  - § One-key locking: Simply press “Key” to lock the safe without changing the passcode
  - § Master Code for guest house application (Administration mode to change master code and other options)
  - § Keypad Sound on/off option; Display on/off option; Low battery warning
  - § AA x 4 and AAA x 3 batteries included for safe and LED device respectively
-

# Specifications



**Elite HD Safe 500mm  
YSELC/500/DW1**

Ext. Size (H x W x D)  
500 x 430 x 350mm  
Int. Size (H x W x D)  
480 x 400 x 260mm  
Weight  
74 kg  
Volume  
50 litres



**Elite HD Safe 700mm  
YSELC/700/DW1**

Ext. Size (H x W x D)  
700 x 430 x 350mm  
Int. Size (H x W x D)  
680 x 400 x 260mm  
Weight  
94.5 kg  
Volume  
71 litres



**Elite Safe Large  
YSELC/900/DW1**

Ext. Size (H x W x D)  
900 x 430 x 350mm  
Int. Size (H x W x D)  
880 x 400 x 260mm  
Weight  
114 kg  
Volume  
92 litres

**\*Remark: Safe box color is Ivory White for China market. It will be in Black for markets outside China.**



# Packaging



Packing design for reference only



Shock proof packaging with foams to protect the safe.



User Manual

- § The packaging design will be color label + Yale carton box
- § It is cost effective and eco-friendly design
- § 4-color label sticker on a printed pattern carton box (2 labels on one box)
- § Shock proof packaging to improve the protection
- § Each unit is with wooden individual wooden pallet for protection and easier trucking.
- § User Manual and Quick Start Guide included



# User Manual



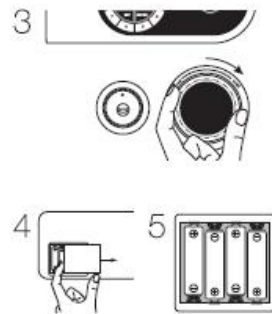
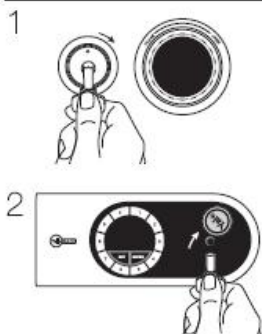
## Securing the safe

To reduce the risk of theft it is essential that your safe is securely fixed. Please use the included bolts and secure to a solid concrete wall.

For maximum performance and correct installation a professional locksmith is recommended to install the safe.

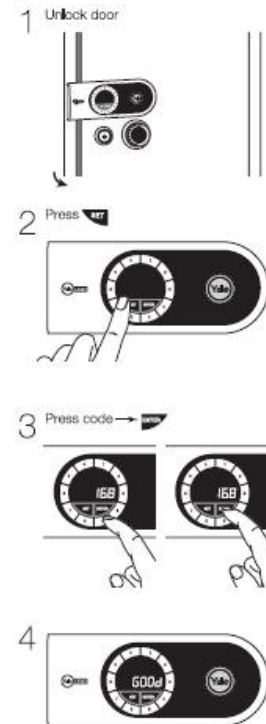
**⚠** This product is heavy. Incorrect installation may result in injury.

## First time operating a new Safe



- 1 Insert the mechanical key and turn it clockwise.
- 2 Insert the emergency key and turn it clockwise.
- 3 Open the safe door by turning the knob clockwise.
- 4 Remove the battery cover located on the rear of the door.
- 5 Place the batteries according to the illustration at the back of the battery compartment.

## Set/re-set your user code



- 1 It is important for user to re-program the User Code and Administration Code for a new Safe unit as soon as it is in place. The User Code may only be programmed when the safe is unlocked. (For re-programming the Administration Code, please follow the instructions in the Administration section in the user manual.)
- 2 Press **SET**. Enter the new User Code (3-6 digits). Press **SET** to complete the User Code setting.
- 3 The display will show 600s and new code will be displayed for ~2 seconds.

**⚡** The default ex-factory User Code is 158. After the User Code is reprogrammed, please remember it well and keep it in a secure place. Once it is re-programmed, the default ex-factory User Code CANNOT be used again to unlock the safe.

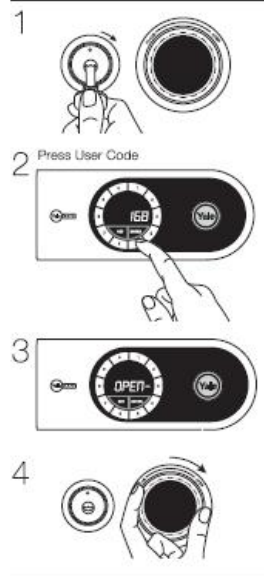
**⚡** If you have forgotten your User Code, use the emergency key or Administration Mode to open the Safe. And then re-set your User Code.

**⚡** Please note, your user code does not have to be reprogrammed when you change the batteries.

# User Manual

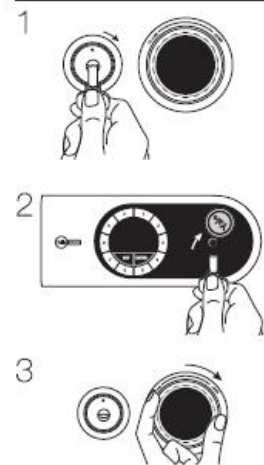


## Opening the Safe by User Code



- 1 Insert the mechanical key and turn it clockwise.
- 2 Enter the user code.
- 3 If the code is correct, the display will show OPEN.
- 4 Open the door by turning the knob clockwise.

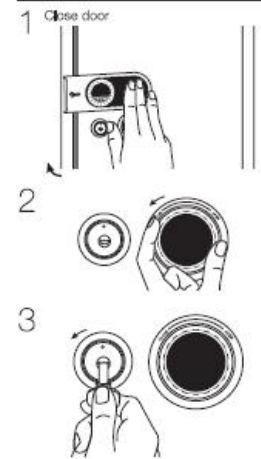
## Opening the Safe by Emergency Key



- 1 Insert the mechanical key and turn it clockwise.
- 2 Insert the emergency key and turn it clockwise.
- 3 Open the Safe by turning the knob clockwise.

**Please note, if an incorrect user code is entered, the display will show "Error" and the door will not open. If the wrong user code is entered 3 consecutive times an alarm will sound for approximately 1 minute. The safe will be locked down for approximately 3 minutes. During this time, the safe cannot be unlocked by electronic user code.**

## Closing the safe



- 1 Close the Safe door.
- 2 Turn the knob anti-clockwise.
- 3 Turn the mechanical key anti-clockwise to lock the Safe.
- 4 If the emergency key was used to unlock the safe, turn also the emergency key anti-clockwise to lock the Safe.

## Administration mode



- 1 Press **Admin** twice to activate the Administration entry mode.
- 2 Press the Administration pass code and then press **Admin** button to enter.
- 3 If the Administration pass code is entered correctly, it will display CC--.
- 4 User can then make different settings under the Administration Mode.
- 5 To exit the Administration Mode, either press **Admin** or it will exit automatically after idle for approximately 20 seconds.

**The default ex-factory Administration Code is 00000. After the Administration Code is reprogrammed, Please remember it well and keep it in a secure place. Once it is re-programmed, the default ex-factory Administration Code CANNOT be used again to unlock the safe.**



## Unlock the safe in Administration mode

- 1 Insert the mechanical key and turn it clockwise.
- 2 Under the Administration Mode, enter 00 and then press .
- 3 The display will show 0PEP-. Turn the knob clockwise to open the Safe.

## Reset the Administration Code

- 1 Under the Administration Mode, enter 01 and then press .
- 2 The display will show REC RC.
- 3 Enter the new Administration Code and then press .
- 4 The display will show REPERT.
- 5 Enter the new Administration Code again for confirmation and then press .
- 6 If the new Administration Code is successfully registered the display will show 0000. Otherwise it will show Error and no new Administration Code would be set.

## Turning sound on/off

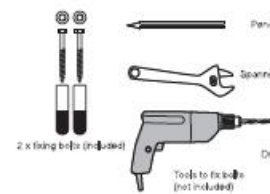
- 1 Under the Administration Mode, enter 02 and then press to toggle between sound on/off. Default setting is on.
    - If display 50U 0F, the audio feedback when operating the safe is turned off.
    - If display 50U 0N, the audio feedback when operating the safe is turned on.
- The sound on/off option does not affect the alarm sounding of 3 consecutive wrong entries.

## Show/hide digits while entering code

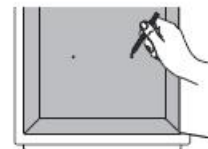
- 1 Under the Administration Mode, enter 03 and then press to toggle between display on/off. Default setting is on.
  - If display 415 0F, it shows \* - \* only when a code is entered and the code will not be displayed after locking.
  - If display 415 0N, the code will be shown during it is entered and the code will be displayed after locking.

## Battery replacement warning

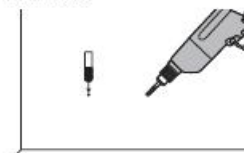
When the battery is about to run out, the display will flash Lo-batt during operation. User should replace with new batteries as soon as possible.



- 1 Mark the position of the safe through fixing holes.



- 2 Remove the safe and drill the holes as marked. If needed, drop the plugs in the drilled holes.

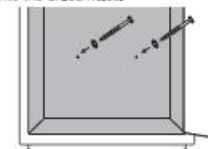


## Installing the safe

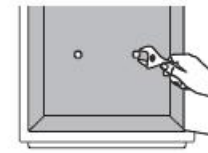
To reduce the risk of theft it is essential that your safe is securely fixed. Please use the provided bolts to fix the safe horizontally and secure to a solid concrete wall.

There are pre-drilled fixing holes on the back. The holes are covered by the inner lining. Please use a sharp tool to penetrate the holes from the back first to locate the hole positions.

- 3 Reposition the safe over the holes. Drop the screws and washers through the safe into the drilled holes.



- 4 Tighten the fixing bolts firmly and ensure there is no movement of the safe.



# Quick Start Guide



## Quick start-up guide

### Welcome!

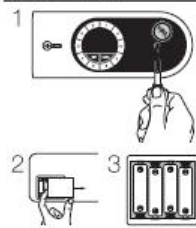
Thank you for buying a Yale safe.  
Before operating your new Yale safe, please read the user manual and fitting guide to ensure maximum performance.

For any inquiries visit [www.yalesafe.com](http://www.yalesafe.com)

⚠ Please do not store the mechanical override keys inside the safe.

An ASSA ABLOY Group Brand ASSA ABLOY

## First time operating a new Safe



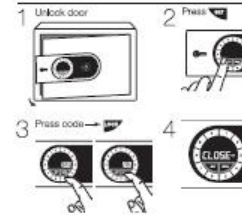
- 1 Open the safe using the manual override key.
- 2 Remove the battery cover located on the rear of the door.
- 3 Place the batteries according to the illustration at the back of the battery compartment.
- 4 Close the safe using the manual override key.

⚠ Please note, when the safe is opened by manual override key, it must be closed by the manual override key too. Otherwise the locking mechanism may be damaged.

The world's favorite lock



## Set/re-set your user code

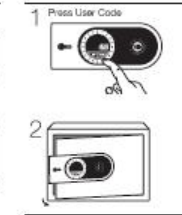


- 1 After installed the batteries, enter the default re-factory code 9999 to unlock the safe.
- 2 Press **⏏**. Enter the new user code (2-6 digits). Press **⏏** to complete the user code setting.
- 3 The display **CLOSE** will confirm that the new code is set and door will be locked at the same time.

⚠ The default re-factory User Code is 9999. After the User Code is reprogrammed, please remember it well and keep it in a secure place. Once it is reprogrammed, the default re-factory User Code CANNOT be used again to unlock the safe.

⚠ It is important to re-program the Administration Code for a new Safe. Please refer to the user manual for Administration Code reprogramming.

## Opening the safe



## Closing the safe



⚠ Please note that if the safe is unlocked by manual override key, it can only be locked by the manual override key.  
If the safe is unlocked by electronic key code, it can only be locked by the electronic key.  
Forcing the safe to lock/lock by different means may damage the internal locking mechanism causing permanent damage to the lock.

# Marketing Materials



- § Product shots
- § Application shots
- § Leaflet
- § Poster



# Ordering Information



Yale Model Name	Yale Model Number	Yale Barcode	Product Photo	Product Size	Packing Size	Net Weight	Gross Weight	20' FCL Qty
Elite HD 500mm	YSELC/500/DW1	4893862050841		H500 x W430 x D350	H595 x W510 x D455	74.0 kg	77.5 kg	120 pcs
Elite HD 700mm	YSELC/700/DW1	4893862050858		H700 x W430 x D350	H795 x W510 x D455	94.5 kg	99.0 kg	90 pcs
Elite HD 900mm	YSELC/900/DW1	4893862050865		H900 x W430 x D350	H995 x W510 x D455	114.0 kg	118.0 kg	75 pcs



# Inquiry and Order



- § For marketing materials and product questions, please contact Yale Product Managers.
- § For inquiries and orders, please contact Yale sales representatives in your corresponding regions.
- ⚡ Or email to: [info@yaleasia.com](mailto:info@yaleasia.com)